



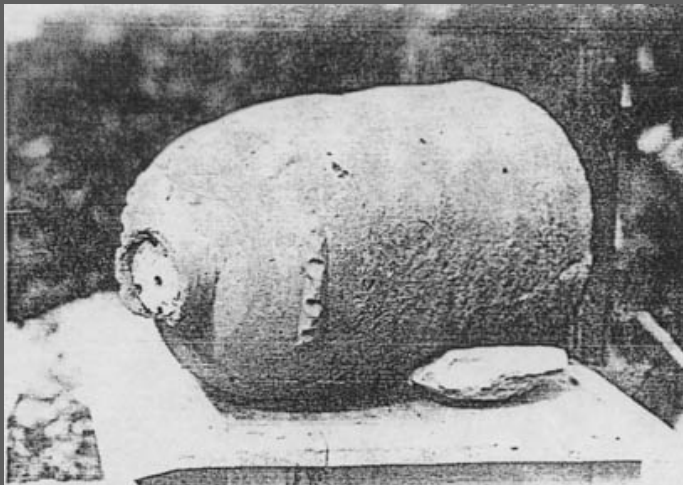
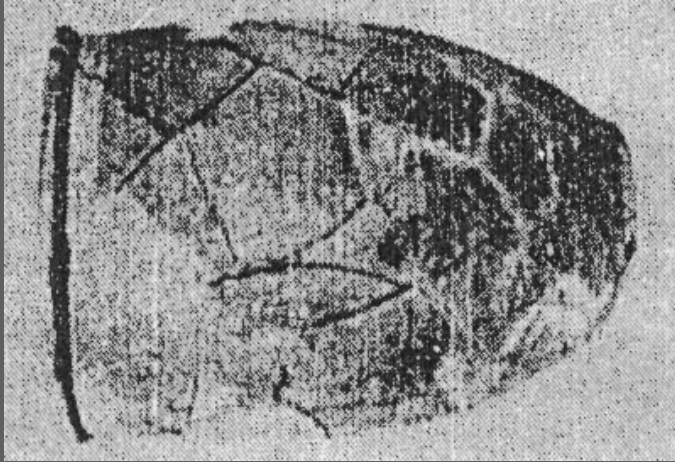
Beekeeping in Greece

F. HATJINA

Hellenic Institute of Apiculture

N. Moudania, 63 200

Past times





Εικόνα 10: Βάζο



2ο-Τεχνος 9ο
Άρτος 1998



Present time

No of beekeepers: 22,000

No of colonies: 1,380,000

Professional beekeepers: 4,000

Colonies: 770,000

Average honey production: 14,000 tones

Honey imports: 1,600 tones

Honey exports: 300 tones

Colony density

(Williams et al. 1991)

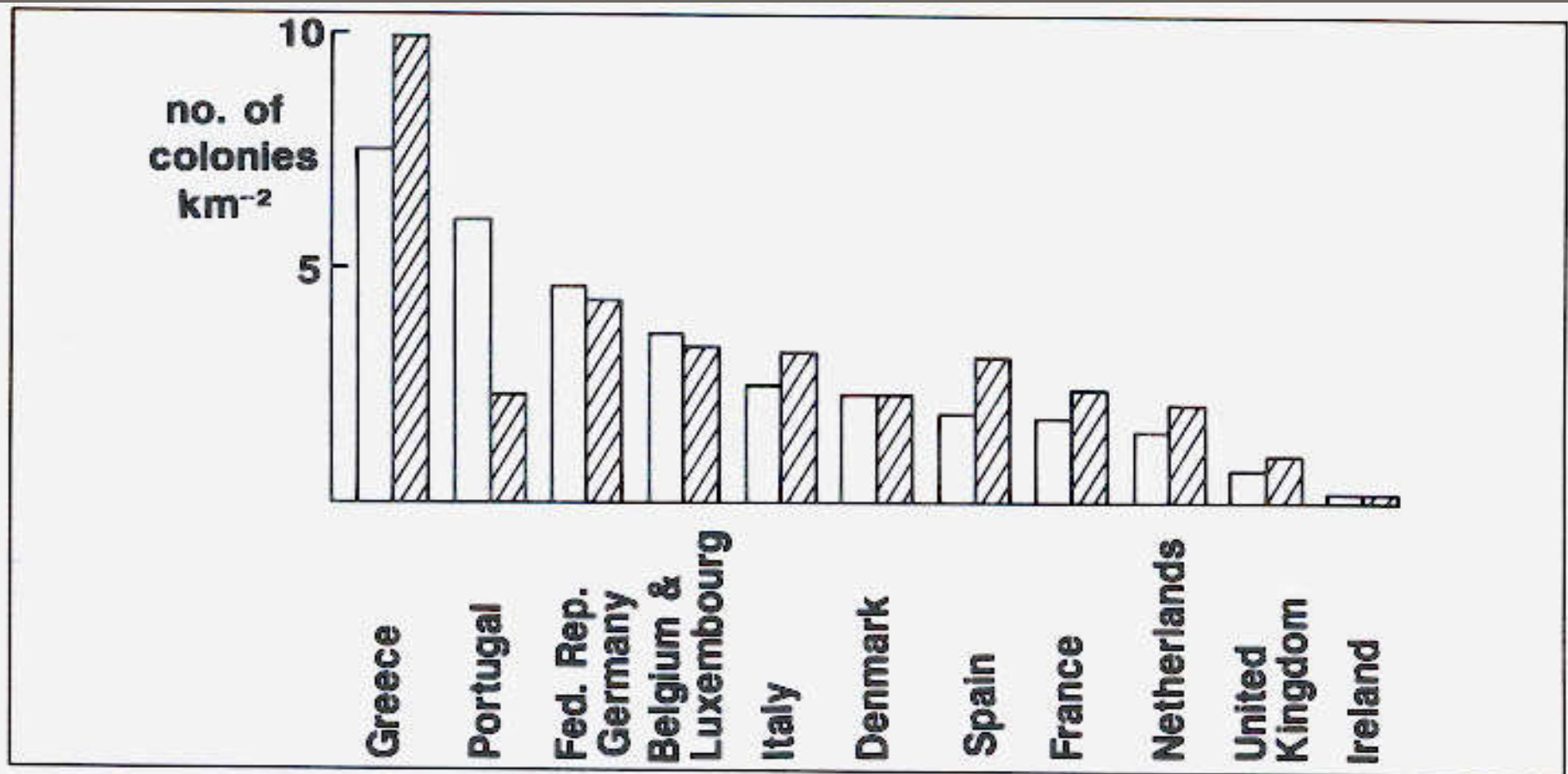

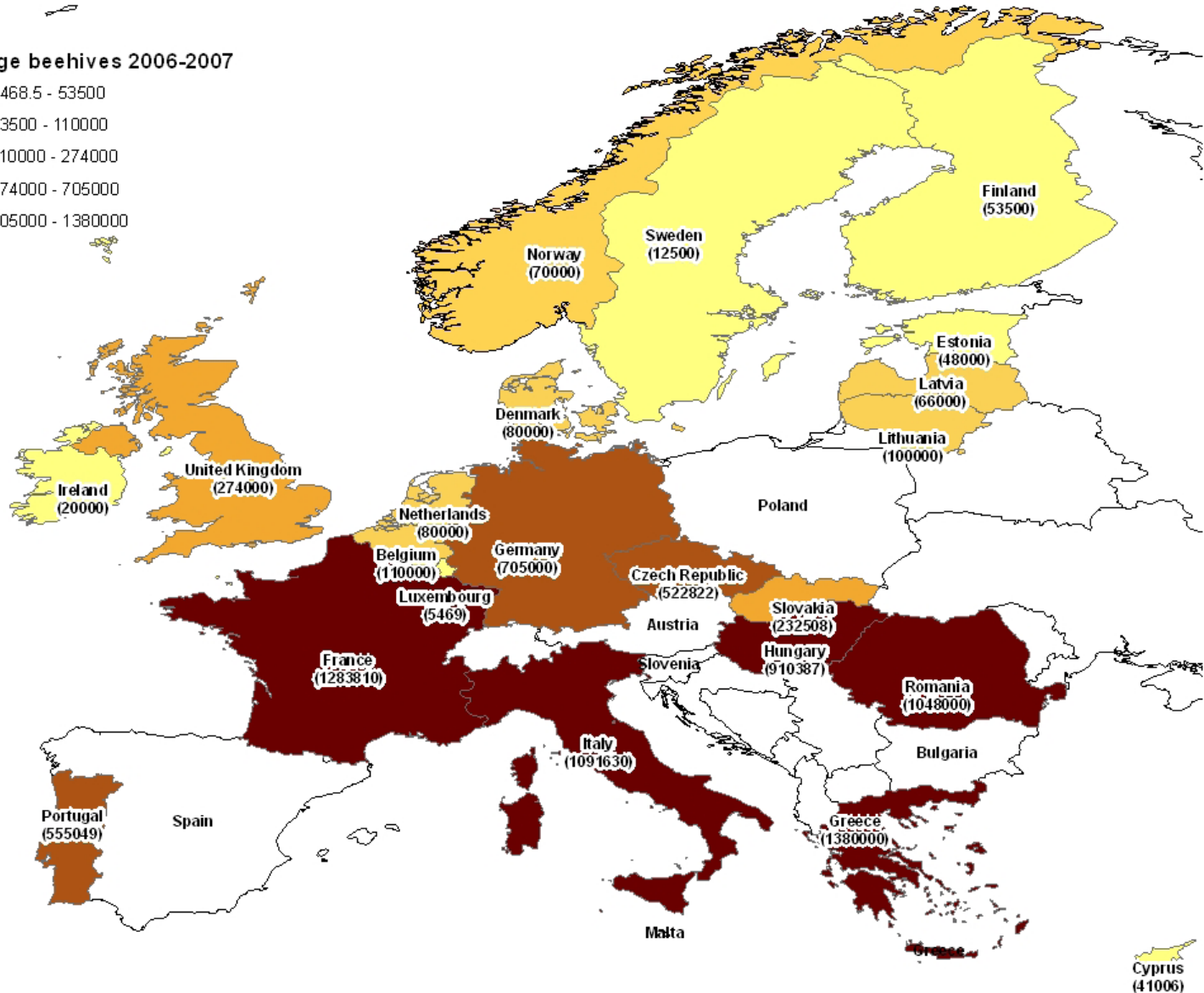
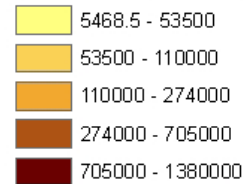


FIG. 8. Estimated mean density of managed colonies of honey bees/ km² in each EC country for c 1970  and c 1989 , derived using colony numbers from Crane¹³⁵ and COPA/COGECA¹³¹, and land areas from Agricultural Situation in the Community¹³⁸.

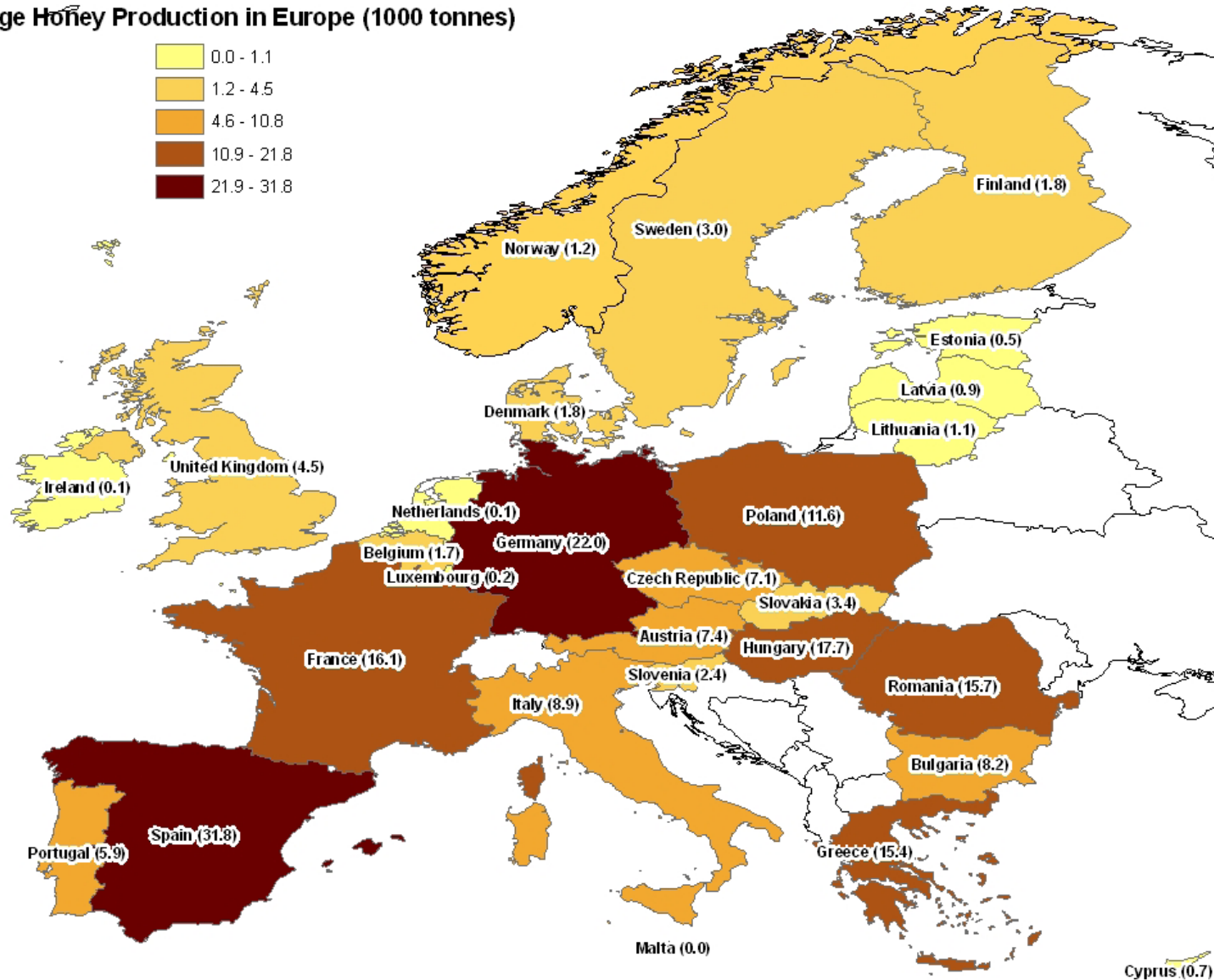
Number of colonies

Average beehives 2006-2007



Honey production- 4th

Average Honey Production in Europe (1000 tonnes)



Honey bee races

(Ruttner 1988)



Honey bee races

(Hatjina et al, 2002)



Queen breeding

- ☐ Good, mated queens are sold for about 12-15€ (naturally mated)
- ☐ About 10 people are queen producers, but we have no specific information on their activity
- ☐ a number of about 50.000- 60.000 queens are produced each year
- ☐ two of the breeders use instrumental insemination

Diseases

Varroa was the most serious disease, but now days Nosema is the problem



Control for Varroa:

**Apistan (fluvalinate), Perizin (coumaphos),
Apitol (cymiazol), Bayvarol (flumethrin),
ApiGuard (thymol), Check mite strips
(coumaphos), thymol, oxalic acid**

Honey production – main areas



Pine honey

**Clover, cotton
honey**

Citrus honey

Fir honey

Thyme honey

Chestnut honey

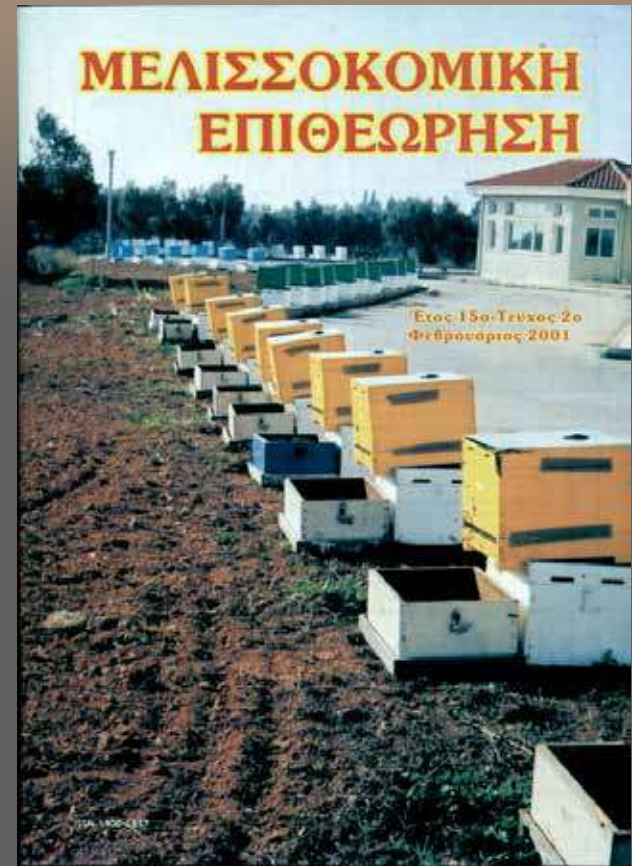
Organizations

- 🇬🇷 About 70-80 beekeeping co-operative units joined in one Co-operative body 'MELISSOKOMIKI'
- 🇬🇷 About 50 syndicalism unions joined in one central body 'FEDERATION OF GREEK BEEKEEPING ASSOCIATIONS'

Journals

‘Melissokomiki
Epitheorisi’

‘Melissokomiko Vima
(Beekeeping tribune)
by the Federation of Gr.
Beek. Associat.



Research institutions

- ❏ **Lab. of Apiculture – Sericulture, School of Agriculture, Aristotle Univ. of Thessalonik**
- ❏ **Lab. Of Agricultural Zoology and Entomology, Agriculture Univ. of Athens**
- ❏ **Lab. of Apiculture – Sericulture, Agriculture Univ. of Athens**
- ❏ **Other Research Institutes.....**

Hellenic Institute of Apiculture

Is the only Bee Research Institute under the auspices of National Agricultural Research Foundation of Greece (N.AG.RE.F.), which is supervised by the Ministry of Agriculture



Bee Research

- Ü Varroa control
- Ü Nosema control
- Ü Study on a thermo-regulated chamber for Varroa control
- Ü Study on the adhesion mechanisms of varroa
- Ü Identification of honey types
- Ü Study on parameters affecting honeydew secretions
- Ü The effects of neo-nicotinoids on bees

Bee Research

- ❏ Study on *Marchalina hellenica* on Fir trees (Apies spp.)
- ❏ Recordings of melliferous flora in Greece
- ❏ Study on insects producing honeydew on fir trees
- ❏ Pesticide residues in bee products
- ❏ Bio-diversity of wild bees in cultivated areas